



KABEER RESIDENCIA



KABEER

SUITS YOU

GREA

BLUE

BLUE

F.A.O

HERITAGE



FRONT SIDE -3 BED + DRAWING LUXURY APARTMENTS

Size: 2364.2 Sq. Ft. x 12000/- = 28,370,400/-

| DOWN PAYMENT | 18th INSTALLMENTS | POSSESSION | TOTAL |
|--------------|-------------------|------------|--------------|
| 9,929,640 | 866,500 | 2,843,760 | 28,370,400/- |

FRONT SIDE -3 BED + DRAWING LUXURY APARTMENTS

Size: 2109.29 Sq. Ft. x 12000/- = 25,311,480/-

| DOWN PAYMENT | 18th INSTALLMENTS | POSSESSION | TOTAL |
|--------------|-------------------|------------|--------------|
| 8,859,018 | 773,901 | 2,522,244 | 25,311,480/- |

FRONT SIDE-2 BED + DRAWING LUXURY APARTMENTS

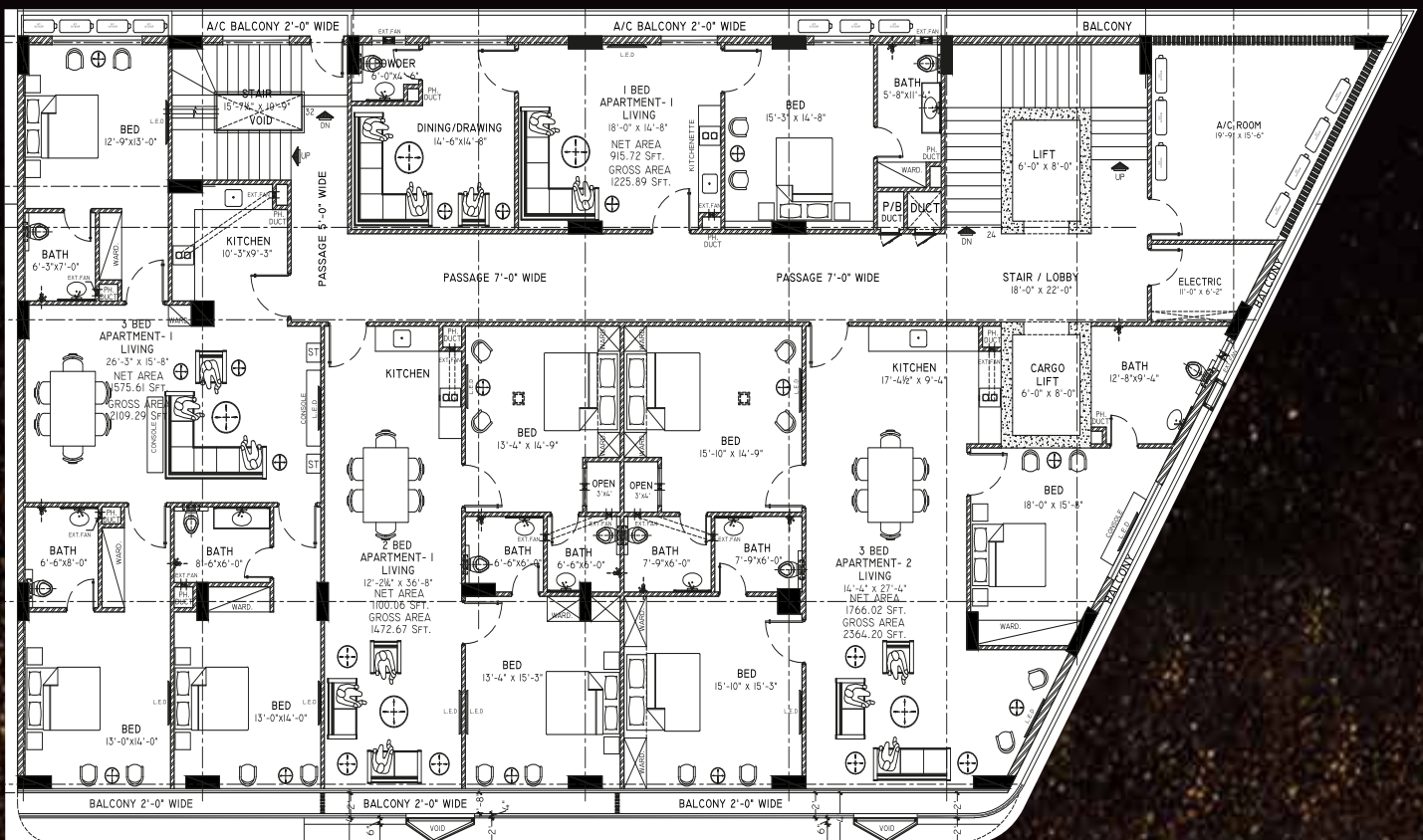
Size: 1472.67 Sq. Ft. x 12000/- = 17,672,042/-

| DOWN PAYMENT | 18th INSTALLMENTS | POSSESSION | TOTAL |
|--------------|-------------------|------------|--------------|
| 6,185,214 | 540,000 | 1,766,826 | 17,672,040/- |

BACK SIDE -1 BED + DRAWING LUXURY APARTMENTS

Size: 1225.89 Sq. Ft. x 10,000/- = 12,256,700/-

| DOWN PAYMENT | 18th INSTALLMENTS | POSSESSION | TOTAL |
|--------------|-------------------|------------|--------------|
| 4,290,615 | 375,000 | 1,218,285 | 12,258,900/- |



FLOOR PLAN

SHOP NO. 1

Size: 950.51 S. Ft. x 65,000/- = 61,783,150/-

| DOWN PAYMENT | 18th INSTALLMENT | POSSESSION | TOTAL |
|--------------|------------------|------------|--------------|
| 18,534,945 | 2,231,058 | 3,089,161 | 61,783,150/- |

SHOP NO. 2

Size: 768.99 S. Ft. x 65,000/- = 49,984,350/-

| DOWN PAYMENT | 18th INSTALLMENT | POSSESSION | TOTAL |
|--------------|------------------|------------|--------------|
| 14,995,305 | 1,804,990 | 2,499,225 | 49,984,350/- |

SHOP NO. 3

Size: 1074.15 S. Ft. x 65,000/- = 69,819,750/-

| DOWN PAYMENT | 18th INSTALLMENT | POSSESSION | TOTAL |
|--------------|------------------|------------|--------------|
| 14,995,305 | 1,804,990 | 2,499,225 | 49,984,350/- |

SHOP NO. 4

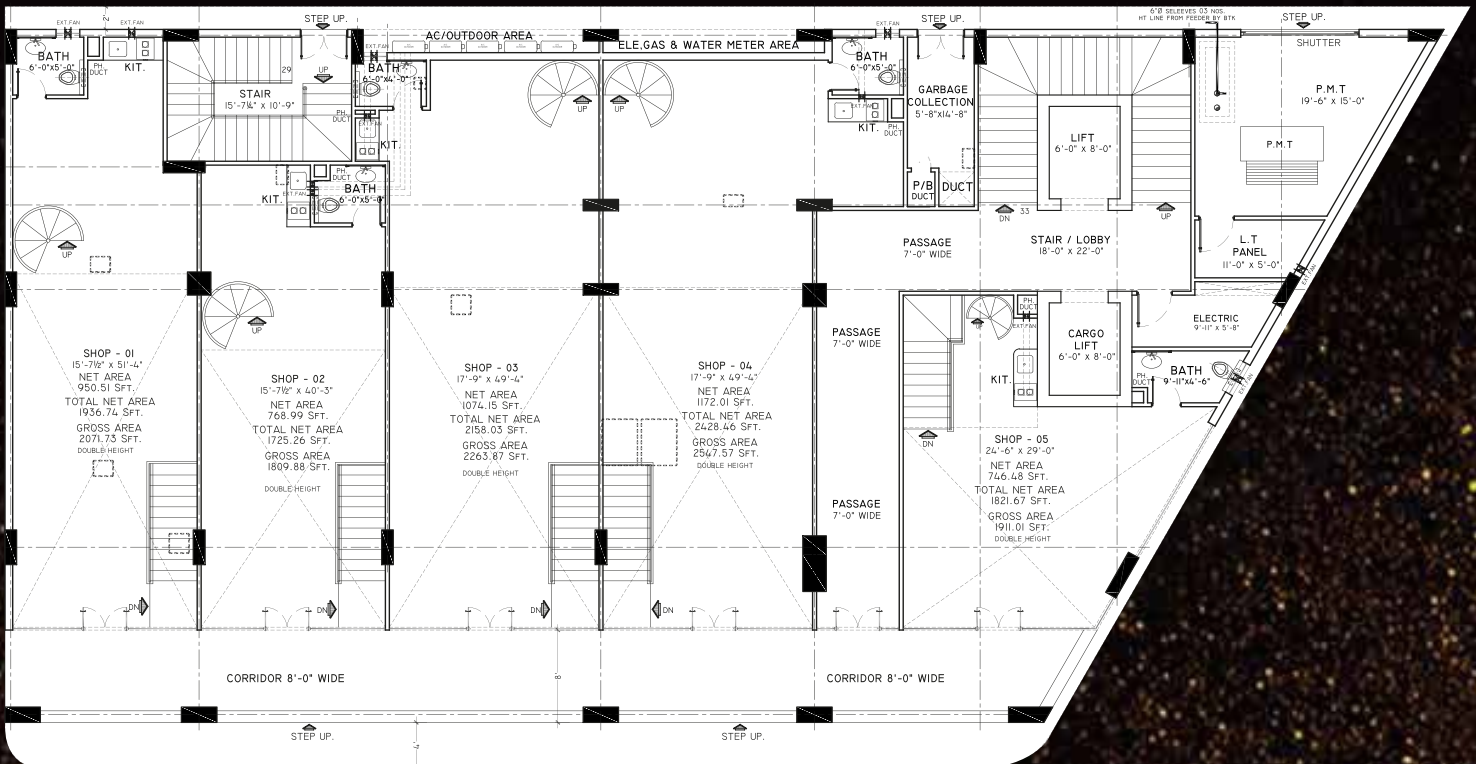
Size: 1172.01 S. Ft. x 65,000/- = 76,180,650/-

| DOWN PAYMENT | 18th INSTALLMENT | POSSESSION | TOTAL |
|--------------|------------------|------------|--------------|
| 22,854,195 | 2,750,967 | 3,809,049 | 76,180,650/- |

SHOP NO. 5

Size: 746.48 S. Ft. x 65,000/- = 45,921,850/-

| DOWN PAYMENT | 18th INSTALLMENT | POSSESSION | TOTAL |
|--------------|------------------|------------|--------------|
| 14,556,360 | 1,752,154 | 2,426,068 | 48,521,200/- |



SHOP PLAN

PROJECT BY



KABEER RESIDENCIA



CONTACT 03214241542